

****BRAND NEW****

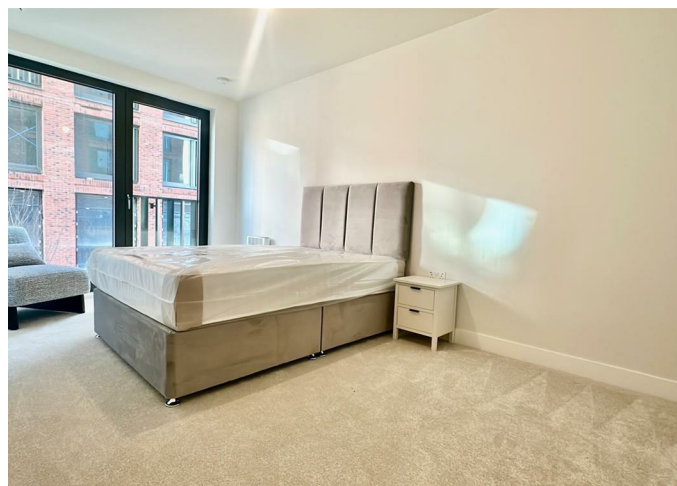


**103, BELMONT
WHARF 2 PITT
STREET,
BIRMINGHAM,
WEST MIDLANDS,
B4 7FG**

£950 PCM

FEATURES

- BRAND NEW- Be The First To Move In!
- Concierge, Gym, Coffee Lounge, Cinema & More
- 2 Juliette Balconies
- 10 Minute Walk To New Street / Bullring
- Luxury Development
- Available Now- Canalside Community
- Fully Furnished



1 Bedroom Apartment located in Birmingham

Welcome to this exquisite new build apartment located in the desirable area of Birmingham's Creative Quarter, Belmont Row, B4. This modern residence offers a perfect blend of comfort and contemporary living, making it an ideal choice for individuals or couples seeking a stylish home.

Spanning an impressive 470 square feet, this apartment features a well-designed layout that includes a spacious reception room, a comfortable bedroom, and a sleek bathroom.

As part of a brand new development, residents will benefit from a range of exceptional amenities. The property boasts a concierge service, ensuring convenience and security, as well as a fully equipped gym for those who value an active lifestyle. Additionally, there are co-working spaces and a library, perfect for professionals or students looking for a productive environment.

Situated within a vibrant canalside community, this apartment offers a unique lifestyle that combines urban living with the tranquillity of waterside views. With its prime location, you will have easy access to local shops, restaurants, and transport links, making it an ideal base for exploring the city.

This property is available now, presenting a fantastic opportunity to secure a modern home in a sought-after location. Do not miss your chance to experience the best of contemporary living at Glasswater Locks.

Call us on

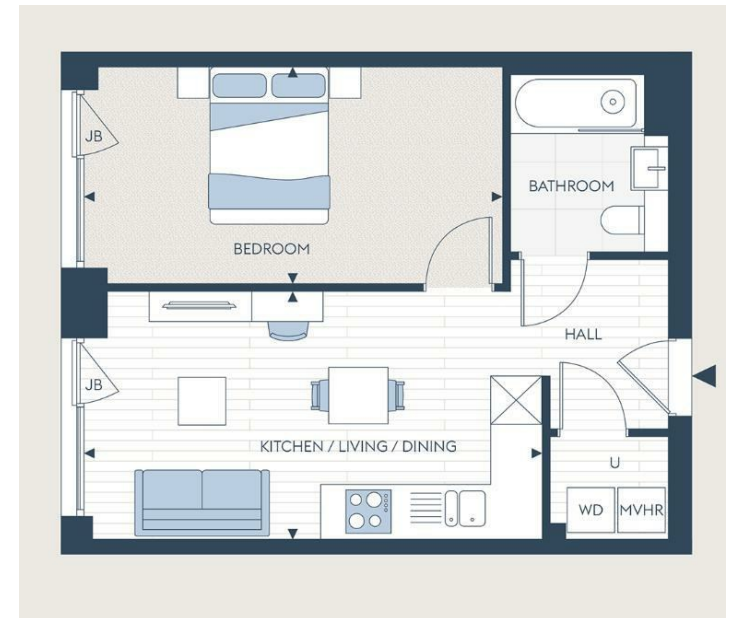
0121 667 0343

hello@swift-property.co.uk

www.swift-property.co.uk

Council Tax Band

B



Agents Note: Whilst every care has been taken to prepare these particulars, they are for guidance purposes only. All measurements are approximate and are for general guidance purposes only and whilst every care has been taken to ensure their accuracy, they should not be relied upon and potential buyers are advised to recheck the measurements.

